

# Rancho Santa Margarita Public Hearing 2

August 28, 2023

# Election Systems

---

1. “At Large”
2. “From District” or “Residence” Districts
3. “By District”

The California Voting Rights Act was written to specifically encourage by-district elections.

# California Voting Rights Act (CVRA)

---

- Under the Federal Voting Rights Act (passed in 1965), a jurisdiction must fail 4 factual tests before it is in violation of the law.
  
- The California VRA makes it significantly easier for plaintiffs to force jurisdictions into “by-district” election systems by eliminating two of the US Supreme Court Gingles tests:
  - ~~■ Can the protected class constitute the majority of a district?~~
  - Does the protected class vote as a bloc?
  - Do the voters who are not in the protected class vote in a bloc to defeat the preferred candidates of the protected class?
  - ~~■ Do the “totality of circumstances” indicate race is a factor in elections?~~
  
- Liability is now determined only by the presence of racially polarized voting

# CVRA Impact

---

## □ Switched (or in the process of switching) as a result of CVRA:

- At least 275 school districts
- 36 Community College Districts
- 191 cities
- 1 County Board of Supervisors
- 53 water and other special districts.

## □ Cases So Far:

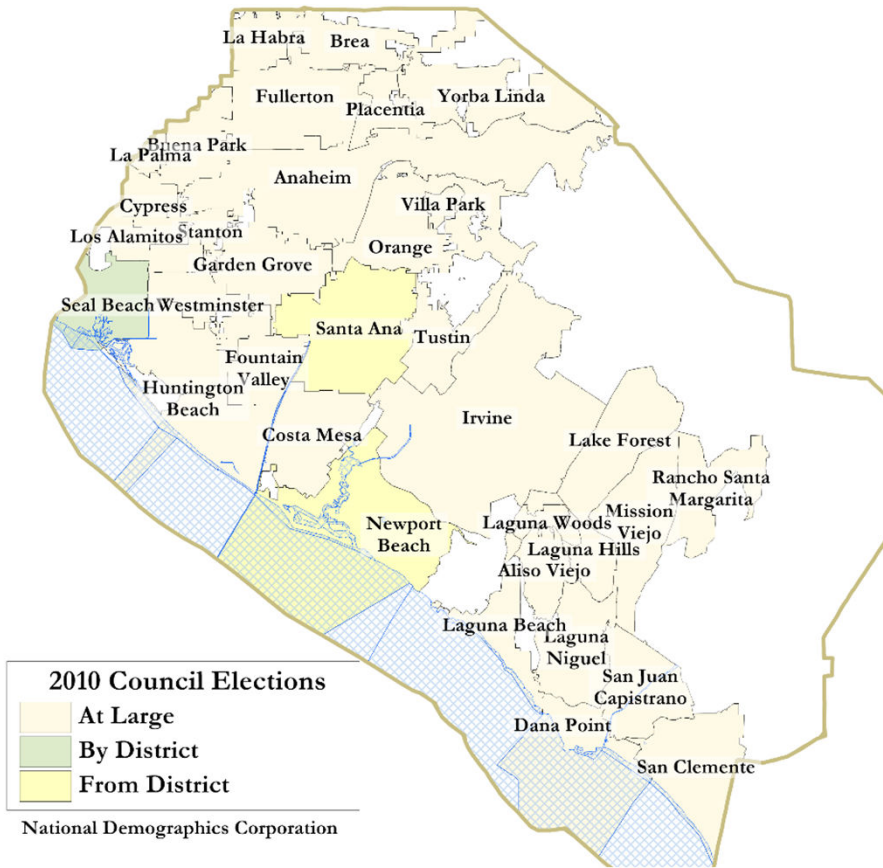
- Palmdale, Santa Clara and Santa Monica went to trial on the merits. Palmdale and Santa Clara lost. Santa Monica is awaiting a decision.
- Modesto and Palmdale each spent about \$1.8 million on their defense (in addition to the attorney fee awards in those cases).
- Santa Monica has spent an estimated \$7 million so far. Plaintiffs in Santa Monica requested \$22 million in legal fees after the original trial.

## □ Key settlements:

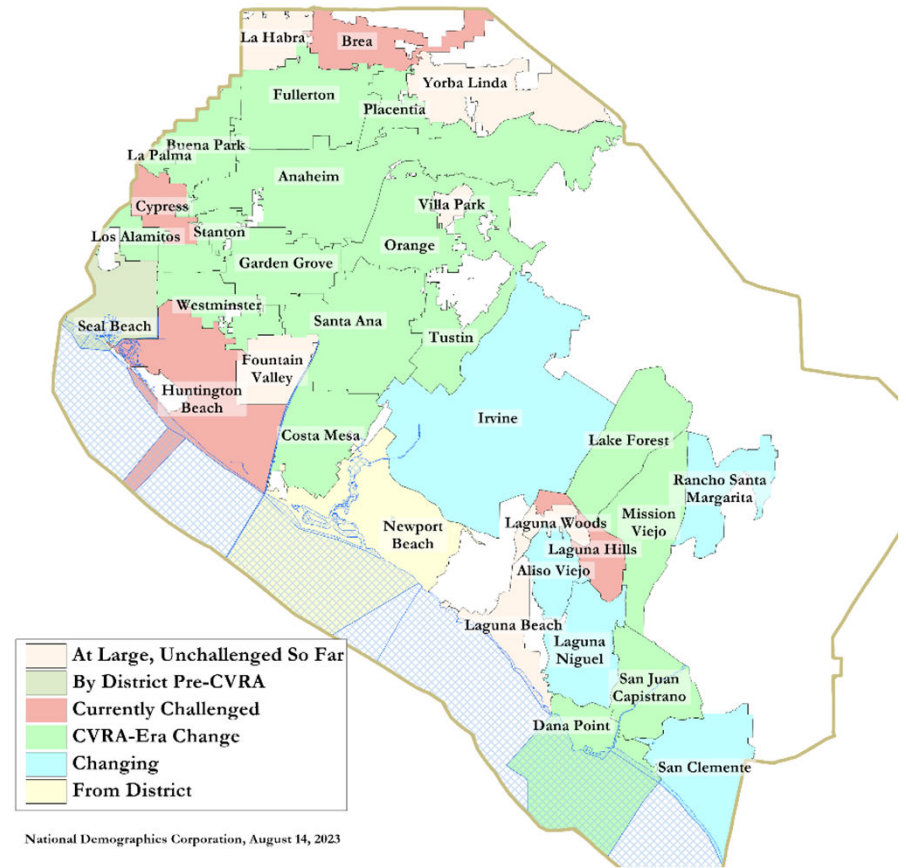
- Palmdale: \$4.7 million
  - Modesto: \$3 million
  - Highland: \$1.3 million
  - Anaheim: \$1.1 million
  - Whittier: \$1 million
  - Santa Barbara: \$600,000
  - Tulare Hospital: \$500,000
  - Camarillo: \$233,000
  - Compton Unified: \$200,000
  - Madera Unified: about \$170,000
  - Hanford Joint Union Schools: \$118,000
  - Merced City: \$42,000
- **An estimated \$16 million in total settlements and court awards so far.**

# CVRA Impact in Orange County

## Council Elections in 2010



## Council Elections today



# Districting Process

Step	Description
<b>Two Initial Hearings</b> Aug 16 & 28	Held prior to release of draft maps. Education and to solicit input on the composition of districts.
<b>Initial Public Map Submission Deadline</b> Sept. 1	Public map submissions must be received by 5pm on Sept. 1 to be considered by the Council at the Hearing on September 13.
<b>Release draft maps</b> Sept. 6	Maps must be posted at least 7 days prior to 3 <sup>rd</sup> hearing.
<b>Initial draft map hearing</b> Sept. 13	Two meetings to discuss and revise the draft maps and to discuss the election sequence.
<b>Final Public Map Submission Deadline</b> Sept. 15	Public map submissions must be received by 5pm on Sept. 15 to be considered by the Council at the Hearing on September 27.
<b>Release draft maps</b> Sept. 20	Maps must be posted at least 7 days prior to 3 <sup>rd</sup> hearing.
<b>Second draft map hearing</b> Sept. 27	Two meetings to discuss and revise the draft maps and to discuss the election sequence.
<b>Map adoption</b> October 11	Map adopted via ordinance. Final map must be posted at least 7 days prior to adoption.

# Districting Rules and Goals

## 1. Federal Laws

Equal Population  
Federal Voting Rights Act  
No Racial Gerrymandering



## 2. California Criteria for Cities

1. **Geographically contiguous**
2. **Undivided neighborhoods and “communities of interest”**  
(Socio-economic geographic areas that should be kept together)
3. **Easily identifiable boundaries**
4. **Compact**  
(Do not bypass one group of people to get to a more distant group of people)

**Prohibited:** “Shall not favor or discriminate against a political party.”

## 3. Other Traditional Redistricting Principles

Respect voters’ choices / continuity in office  
Future population growth

# Demographic Summary

Each of **four** districts must contain about 12,000 people.

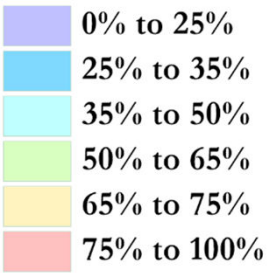
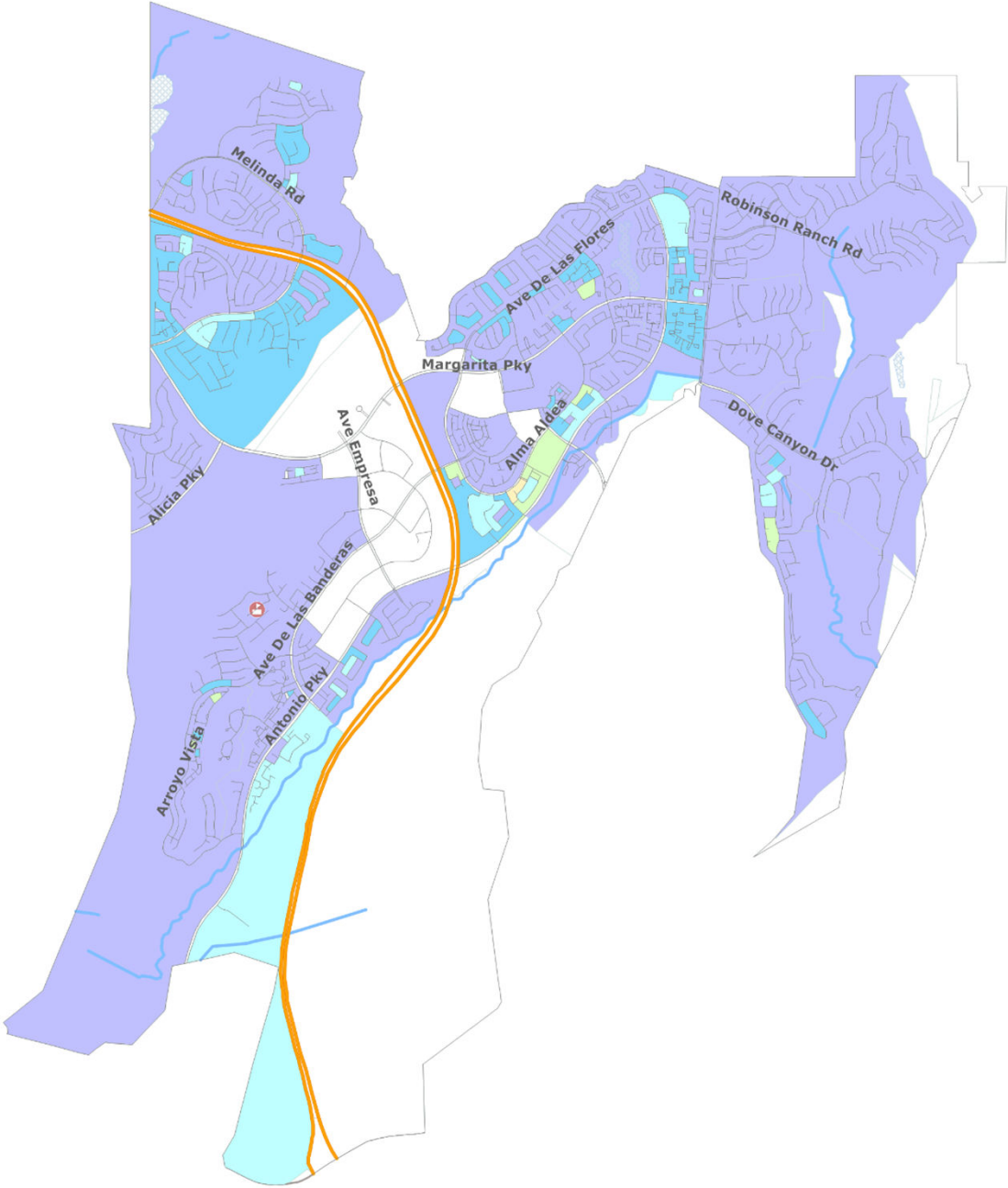
Each of **five** districts must contain about 9,600 people.

Category	Field	Total	Category	Field	Total
2020 Census	Total Population	48,000	Age	age0-19	26%
Total Pop.	Hispanic/Latino	21%		age20-60	56%
	NH White	58%		age60plus	17%
	NH Black	2%	Immigration	immigrants	18%
	NH Asian/Pac.Isl.	16%		naturalized	62%
	NH Native Amer.	1%	Language spoken at home	english	78%
Citizen Voting Age Pop	Total	33,337		spanish	11%
	Hisp	17%		asian-lang	5%
	NH White	68%		other lang	6%
	NH Black	2%	Language Fluency	Speaks Eng. "Less than Very Well"	6%
	Asian/Pac.Isl.	12%		Education (among those age 25+)	hs-grad
Native Amer.	1%	bachelor	34%		
Voter Registration (Nov 2020)	Total	31,668	graduatedegree		16%
	Latino est.	15%	Child in Household	child-under18	38%
	Spanish-Surnamed	14%	Pct of Pop. Age 16+	employed	73%
	Asian-Surnamed	6%		Household Income	income 0-25k
	Filipino-Surnamed	2%	income 25-50k		9%
	NH White est.	75%	income 50-75k		11%
NH Black	3%	income 75-200k	45%		
Voter Turnout (Nov 2020)	Total	28,279	income 200k-plus		29%
	Latino est.	14%	Housing Stats	single family	74%
	Spanish-Surnamed	13%		multi-family	26%
	Asian-Surnamed	6%		rented	28%
	Filipino-Surnamed	2%		owned	72%
	NH White est.	76%	Total population data from California's adjusted 2020 Census data. Citizen Voting Age Population, Age, Immigration, and other demographics from the 2017-2021 American Community Survey and Special Tabulation 5-year data. Turnout and Registration data from California Statewide Database. "Latino" figures calculated by NDC using Census Bureau's Latino undercount by surname estimate.		
NH Black	3%				
Voter Turnout (Nov 2018)	Total	20,189			
	Latino est.	13%			
	Spanish-Surnamed	12%			
	Asian-Surnamed	5%			
	Filipino-Surnamed	1%			
NH White est.	78%				
NH Black est.	3%				



# Latino CVAP

There is a geographic concentration of Latinos in and around the Villas Antonio apartments (next to Pavilions/CVS).



Asian-Americans and African-Americans are not geographically concentrated anywhere in the City.

# Defining Neighborhoods

---

**1<sup>st</sup> Question: What is your neighborhood?**

**2<sup>nd</sup> Question: What are its geographic boundaries?**

**Examples of physical features defining a neighborhood boundary:**

- Natural neighborhood dividing lines, such as highway or major roads, rivers, canals and/or hills
- Areas around parks or schools
- Other neighborhood landmarks

**In the absence of public testimony, planning records and other similar documents may provide definition.**



# Beyond Neighborhoods: Defining Communities of Interest

---

## 1<sup>st</sup> Question: What defines your community?

- Geographic Area, plus
- Shared issue or characteristic
  - Shared social or economic interest
  - Impacted by county policies
- Tell us “your community’s story”

## 2<sup>nd</sup> Question: Would this community benefit from being “included within a single district for purposes of its effective and fair representation”?

- Or would it benefit more from having multiple representatives?

Definitions of Communities of Interest may not include relationships with political parties, incumbents, or political candidates.

# Census Block Problems



- ❑ Census Block lines (shown in blue) do not turn out well where there are hillsides, cul-de-sacs or other neighborhoods not clearly bounded by streets.
- ❑ Census Block lines in RSM cut through neighborhoods and combine neighborhood pieces almost randomly.
- ❑ NDC has carefully divided the Census Blocks and assigned their population shares to the underlying neighborhoods.
- ❑ The base layer of geography for maps will be based on local neighborhood boundaries within Census Blocks.



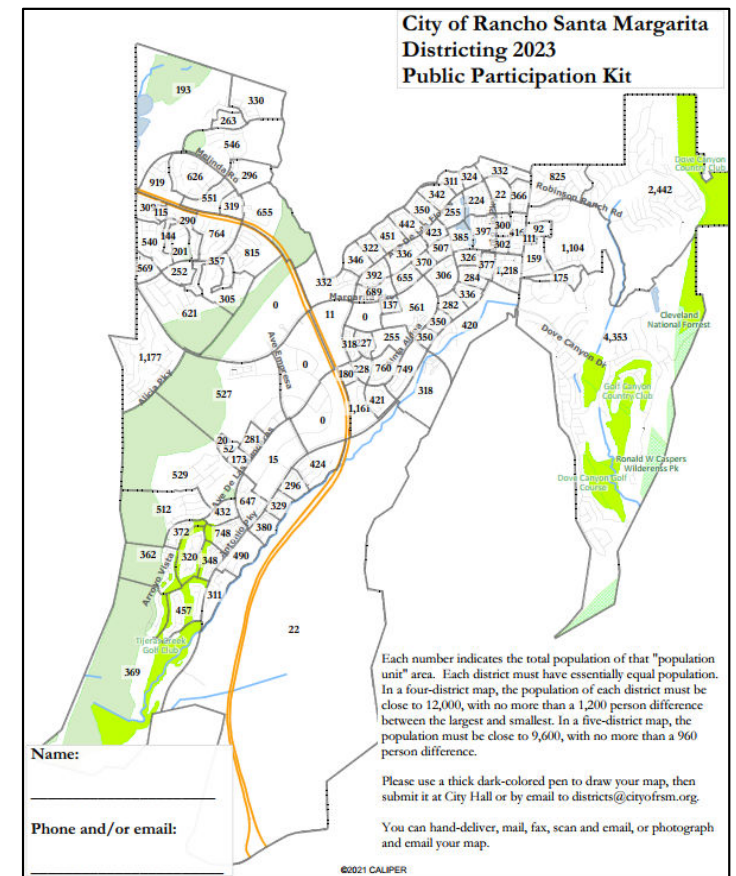
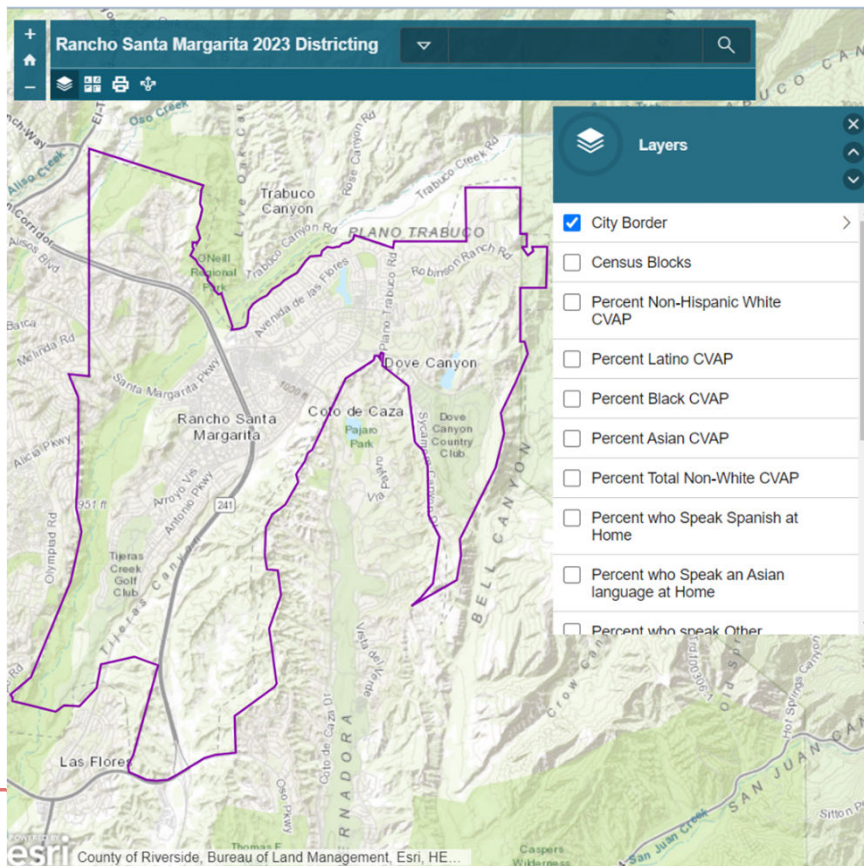
# Homeowner Associations

---



# Public Mapping and Map Review Tools

- Different tools for different purposes
- Different tools for different levels of technical skill and interest
  - Simple “review draft maps” tool
  - Paper-based “Draw a draft map” tool



# Public Hearing & Discussion

---

What is your neighborhood and what are its boundaries?

What other notable areas are in the City, and what are their boundaries?

Any questions about the map tools?

# Share Your Thoughts

---

**Website**

**DrawRSM.org**

**Phone**

**(949) 635-1806**

**Email**

**districts@cityofrsm.org**